



## Location Map



### Some of our other Projects in Wai



Sakshi Vihar



Sakshi Ratna



Sakshi Heights

**Architect :** Modern Designers, Satara - 942302429

**R.C.C. Consultant :** Mr. Shiram Kulkarni - 9822057378

**Legal Advisor :** Adv. Mr. Umesh Sanas - 982263910

**Project Engg. :** Mr. Nilesh Sawant - 9762036046

### Distance from our site

- Shirvwal MIDC : 30km
- Satara City : 35km
- Pune City : 87km
- Dhom : 9km
- Panchgani : 17km
- Mahabaleshwar : 33km

Anil Sawant Venture



### Project by Sakshi Samuh Developers

**Wai Office :** Sakshi Shilp, S/No 70/1A,  
Wai Bavdhan Road, Near Sandesh Resort,  
Songirwadi, Wai-412803, Tal-Wai Dist- Satara.  
Tel. : 02167-227415,  
Cell : 9422600483, 9922439117  
Web : [www.sakshiconstructions.com](http://www.sakshiconstructions.com)  
Email : [sakshicon@rediffmail.com](mailto:sakshicon@rediffmail.com)

**Pune Office :** Office No. 215, 2nd Floor,  
Pentagon, Near Hotel Panchami,  
Pune Satara Road, Pune-411009

Note: This brochure is purely conceptual and not a legal offering. The company reserves the right to add, delete or alter any details, amenities and / or specifications in its endeavour to make improvements as and when required. Developers reserve the right to amend the plans, elevations, colour schemes, colour schemes, add any floor, buildings in the layout, and change the numbering of flats.



# Sakshi Shilp

WITNESS THE CHANGING NATURE



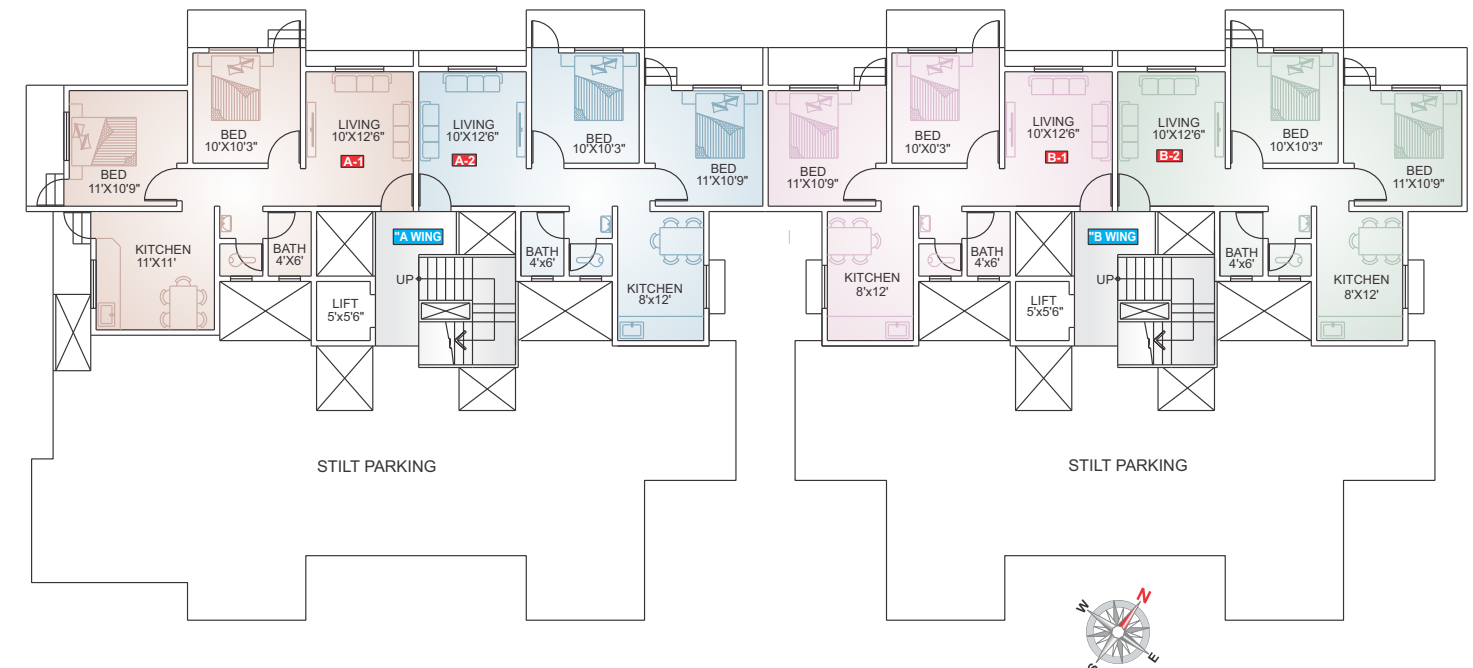
*A Paradise within Paradise*

1 & 2 BHK Exclusive Premium Flats @ WAI

*Design and Expression*



**Sakshi Shilp**  
WITNESS THE CHANGING NATURE



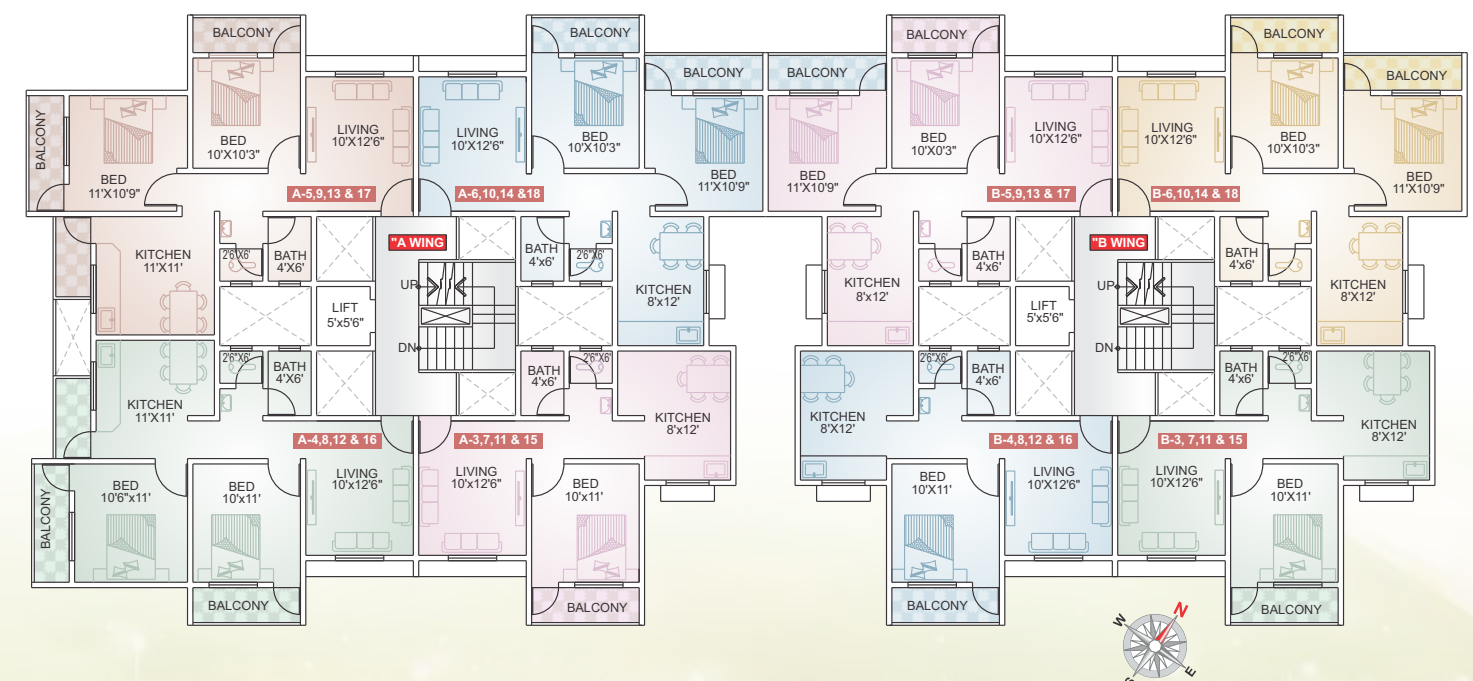
**GROUND / PARKING FLOOR PLAN**



**1bhk**



**2bhk**



**TYPICAL FLOOR PLAN  
(FIRST, SECOND, THIRD & FOURTH FLOOR)**

*Value at Your Terms*

**Premium amenities**

**Structure**

R.C.C. framed earthquake resistant structure  
6" thick external and 4" internal brick walls

**Flooring**

Vitrified High Quality 2" x 2" Tiles in living & 16" x 16" in entire flat.  
Antiskid tiles in toilets, dry balcony and terrace

**Kitchen**

Granite kitchen otta. With stainless steel sink  
Designer glazed tiles in kitchen up to slab level

**Doors**

Main door with laminate & Teakwood door frame, Internal flush doors and P.V.C. door for bathroom

**Windows**

Three track powder coated aluminum windows  
Marble window frame  
M-S safety grills for windows

**Toilets / Sanitary**

Designer glazed tiles up to 7" height  
Provision for water heater  
Concealed plumbing with Premium high quality C.P fittings

**Electrification**

Copper wiring with circuit breakers  
Cable & telephone points in living  
Adequate electric points

**Painting**

OBD paint in all rooms  
Super quality / Tex. / Cement paint for external walls

**Life style amenities**

- Provision for lift in each building
- Security compound wall with plantation
- Elegant entrance gate with security cabin
- Landscaped garden
- Attractive elevation
- Adequate parking space
- 24 hrs water supply
- Provision of street lights
- Children play area & benches for senior citizens